

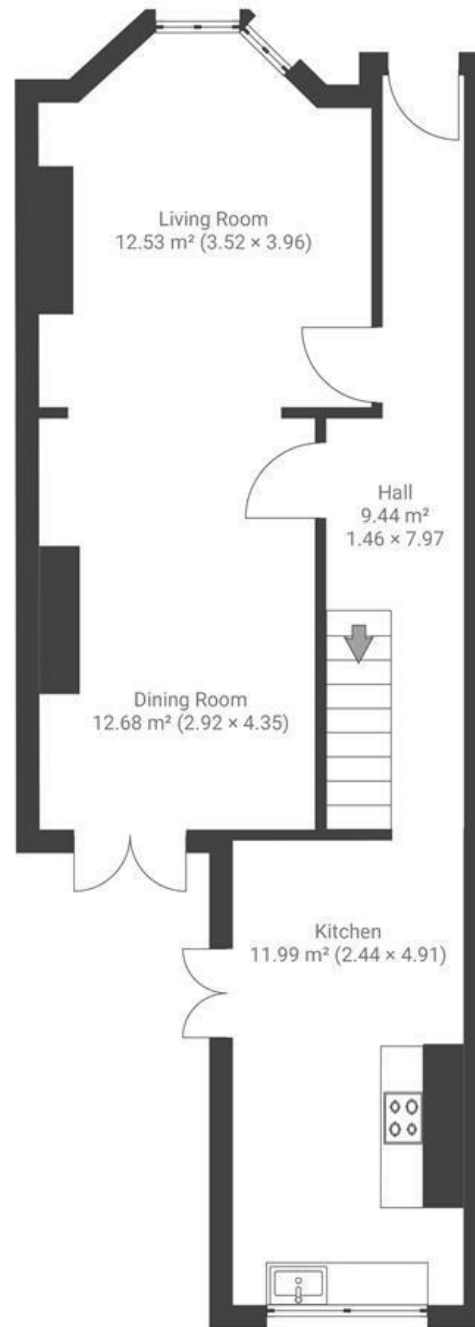
# Raymend Road

## VICTORIA PARK

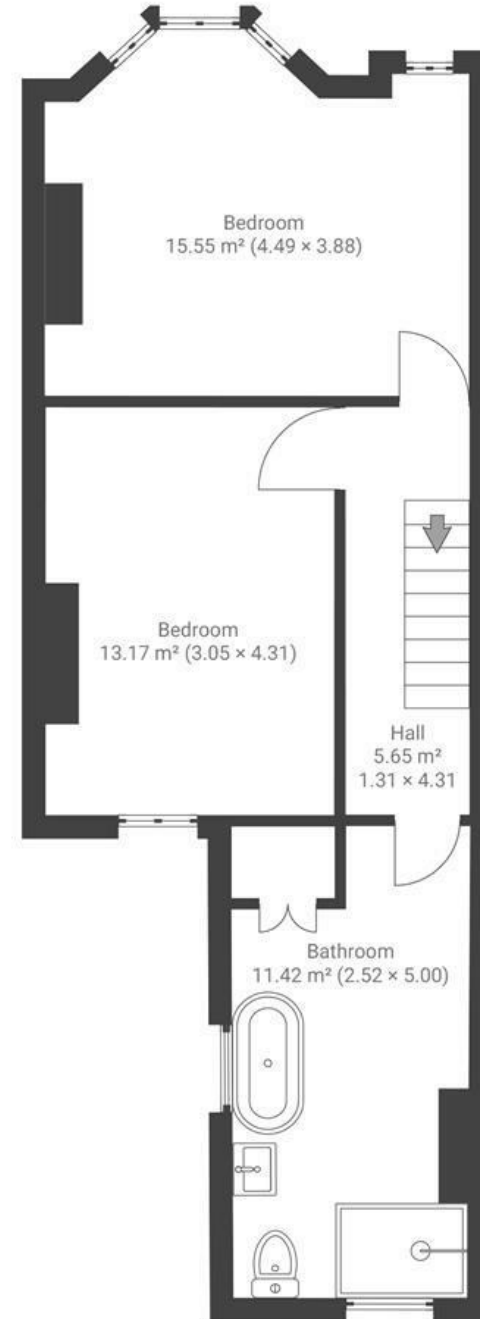
APPROXIMATE FLOOR AREA  
97 SQM / 1044 SQFT



GROUND FLOOR



FIRST FLOOR



Boardwalk

# Raymend Road , BRISTOL

£

£465,000



BS3 4QP

ZZZ

2 Bedrooms



1 Bathrooms

*"We love laying in our hammocks in the garden, watching the plants change and grow. We love the fact you can see Victoria Park from the house. The street is incredibly friendly and kind - there is always someone to borrow power tools from. We got hope painted on the house to brighten up people's days so people call it 'Hope House' and always remark on how lovely it is."*

